

ID	Task Name	Duration	Start	Finish	December 2013												January 2014												February 2014								
					12	15	18	21	24	27	30	3	6	9	12	15	18	21	24	27	30	2	5	8	11	14	17	20	23	26	29	1	4	7			
1																																					
2	HOUSE A	171 days	Mon 11/18/13	Mon 7/14/14																																	
3																																					
4	PREPARE FOR EXCAVATION	5 days	Mon 11/18/13	Fri 11/22/13																																	
5	REMOVE TREES	5 days	Mon 11/18/13	Fri 11/22/13																																	
6	REMOVE BRUSH	2 days	Mon 11/18/13	Tue 11/19/13																																	
7	LAYOUT FOR EXCAVATION	3 days	Mon 11/18/13	Wed 11/20/13																																	
8	EXCAVATE TO HARDPAN	5 days	Mon 11/18/13	Fri 11/22/13																																	
9																																					
10	FOUNDATIONS	55 days	Mon 11/18/13	Fri 1/31/14																																	
11																																					
12	LAYOUT FOOTINGS	2 days	Mon 11/18/13	Tue 11/19/13																																	
13	FORM FOOT/FOUND	10 days	Wed 11/20/13	Tue 12/3/13																																	
14	INSTALL STEEL	4 days	Wed 12/4/13	Mon 12/9/13																																	
15	STRUCTURAL INSPECTION	2 days	Tue 12/10/13	Wed 12/11/13																																	
16	BUILDING INSPECTION	2 days	Tue 12/10/13	Wed 12/11/13																																	
17	POUR CONCRETE	2 days	Thu 12/12/13	Fri 12/13/13																																	
18	STRIP FORMS	5 days	Mon 12/16/13	Fri 12/20/13																																	
19	DAMPROOFING	5 days	Mon 12/23/13	Fri 12/27/13																																	
20	DRAIN TILE	8 days	Mon 12/30/13	Wed 1/8/14																																	
21	SITE SERVICES	5 days	Mon 12/30/13	Fri 1/3/14																																	
22	FORM WORK FOR GARAGE SLAB	4 days	Mon 12/23/13	Thu 12/26/13																																	
23	STEEL FOR SLAB	2 days	Fri 12/27/13	Mon 12/30/13																																	
24	POUR CONCRETE FOR SLAB	3 days	Tue 12/31/13	Thu 1/2/14																																	
25	STRIP FORMWORK BENEATH SLAB	2 days	Thu 1/30/14	Fri 1/31/14																																	
26																																					
27	FRAMING	52 days	Thu 1/9/14	Fri 3/21/14																																	
28																																					
29	INSTALL MAIN FLOOR	5 days	Thu 1/9/14	Wed 1/15/14																																	
30	BACKFILL	5 days	Thu 1/16/14	Wed 1/22/14																																	
31	FRAME MAIN FLOOR WALLS	7 days	Thu 1/23/14	Fri 1/31/14																																	
32	FRAME SECOND FLOOR WALLS	8 days	Mon 2/3/14	Wed 2/12/14																																	
33	INSTALL ROOF TRUSSES	10 days	Thu 2/13/14	Wed 2/26/14																																	
34	SHEATH ROOF	5 days	Thu 2/27/14	Wed 3/5/14																																	
35	ROOFING	12 days	Thu 3/6/14	Fri 3/21/14																																	
36	INSTALL WINDOWS	4 days	Thu 3/6/14	Tue 3/11/14																																	
37	INSTALL EXTERIOR DOORS	5 days	Wed 3/12/14	Tue 3/18/14																																	
38																																					
39	SERVICES	24 days	Wed 3/19/14	Mon 4/21/14																																	
40																																					

Project: HOUSE A
Date: Wed 9/10/14

Task

Progress

Summary

External Tasks

Deadline










Split

Milestone










Project Summary

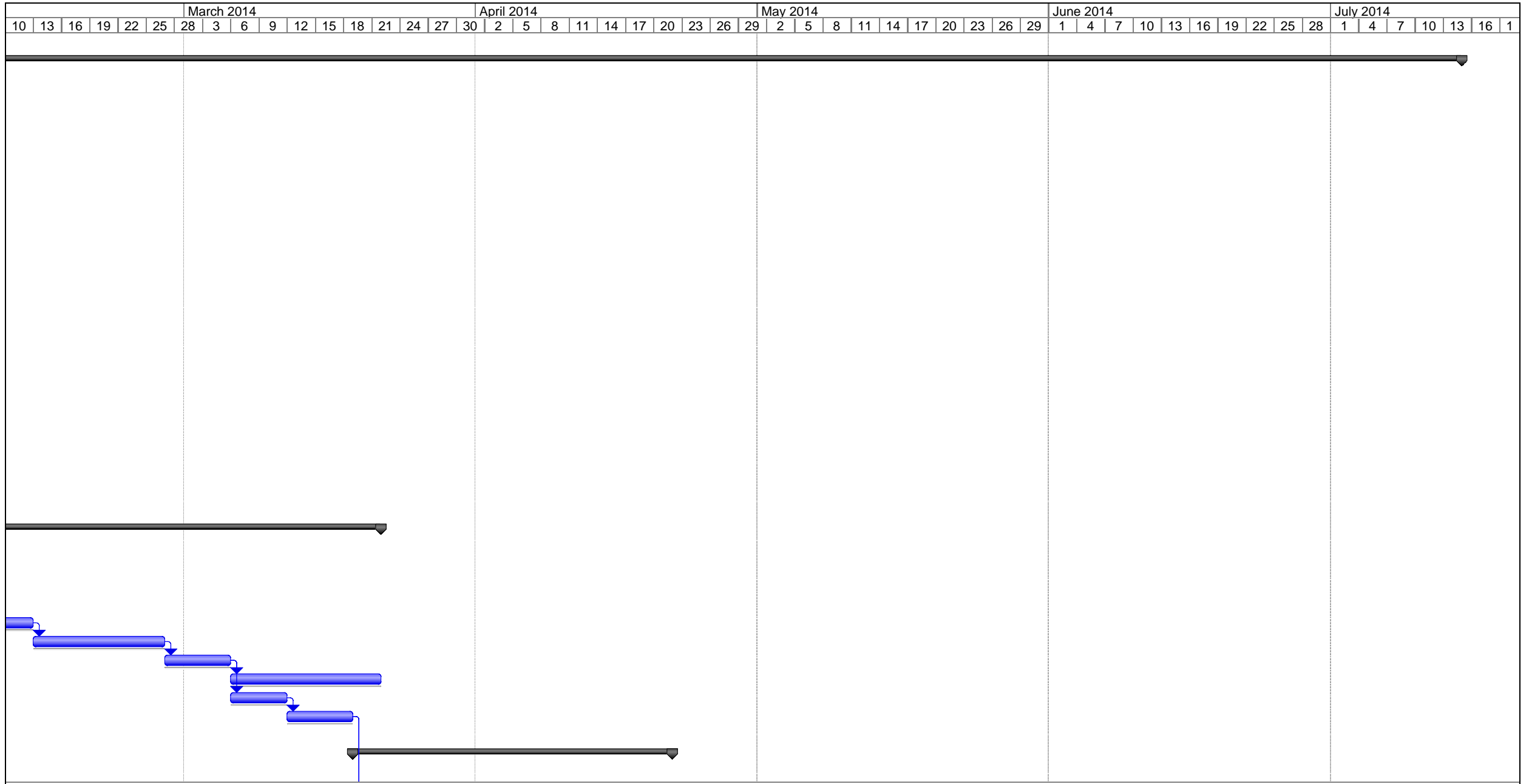
External Milestone

ID	Task Name	Duration	Start	Finish	December 2013												January 2014							February 2014																
					12	15	18	21	24	27	30	3	6	9	12	15	18	21	24	27	30	2	5	8	11	14	17	20	23	26	29	1	4	7						
41	ROUGH IN DUCTING	4 days	Wed 3/19/14	Mon 3/24/14																																				
42	ROUGH IN PLUMBING	6 days	Tue 3/25/14	Tue 4/1/14																																				
43	ROUGH IN ELECTRICAL	14 days	Wed 4/2/14	Mon 4/21/14																																				
44	ROUGH IN LOW VOLTAGE	5 days	Wed 4/2/14	Tue 4/8/14																																				
45	ROUGH IN GAS	4 days	Wed 4/2/14	Mon 4/7/14																																				
46	ROUGH IN OTHER	5 days	Wed 4/2/14	Tue 4/8/14																																				
47	INSPECTIONS	9 days	Wed 4/9/14	Mon 4/21/14																																				
48																																								
49	EXTERIOR CLADDING	36 days	Wed 3/19/14	Wed 5/7/14																																				
50																																								
51	PAPER ENTIRE HOUSE	4 days	Wed 3/19/14	Mon 3/24/14																																				
52	TRIM OUT WINDOWS/DOORS	5 days	Tue 3/25/14	Mon 3/31/14																																				
53	INSTALL RAINSCREEN	6 days	Tue 3/25/14	Tue 4/1/14																																				
54	INSTALL CLADDING	20 days	Wed 4/2/14	Tue 4/29/14																																				
55	PAINT TRIM	6 days	Wed 4/30/14	Wed 5/7/14																																				
56																																								
57	INTERIOR FINISHING	60 days	Tue 4/22/14	Mon 7/14/14																																				
58																																								
59	INSULATION TO ALL AREAS	3 days	Tue 4/22/14	Thu 4/24/14																																				
60	INSPECTION	2 days	Fri 4/25/14	Mon 4/28/14																																				
61	DRYWALL TO ALL AREAS	12 days	Tue 4/29/14	Wed 5/14/14																																				
62	PAINT PRIMER & ONE COAT	7 days	Thu 5/15/14	Fri 5/23/14																																				
63	INSTALL DOORS	5 days	Mon 5/26/14	Fri 5/30/14																																				
64	INSTALL FLOOR TILE	4 days	Mon 5/26/14	Thu 5/29/14																																				
65	INSTALL WALL TILE	5 days	Mon 5/26/14	Fri 5/30/14																																				
66	INSTALL TRIM	10 days	Mon 6/2/14	Fri 6/13/14																																				
67	INSTALL BASBOARD	7 days	Mon 6/16/14	Tue 6/24/14																																				
68	INSTALL CEILING TRIM	6 days	Mon 5/26/14	Mon 6/2/14																																				
69	INSTALL MILLWORK	7 days	Mon 5/26/14	Tue 6/3/14																																				
70	INSTALL BUILT INS	5 days	Mon 5/26/14	Fri 5/30/14																																				
71	INSTALL COUNTERS	12 days	Wed 6/4/14	Thu 6/19/14																																				
72	FINAL FINISH PLUMBING	5 days	Fri 6/20/14	Thu 6/26/14																																				
73	FINAL FINISH ELECTRICAL	8 days	Mon 5/26/14	Wed 6/4/14																																				
74	PAINT WOOD WORK	12 days	Tue 6/3/14	Wed 6/18/14																																				
75	FINAL FINISH PAINT	6 days	Fri 6/27/14	Fri 7/4/14																																				
76	INSTALL CARPET	4 days	Mon 7/7/14	Thu 7/10/14																																				
77	FINAL CLEAN UP	2 days	Fri 7/11/14	Mon 7/14/14																																				
78																																								
79	EXTERIOR HARDSCAPE	21 days	Wed 4/30/14	Wed 5/28/14																																				
80																																								

Project: HOUSE A Date: Wed 9/10/14	Task  Progress 	Summary 	External Tasks 	Deadline 
Split 	Milestone 	Project Summary 	External Milestone 	

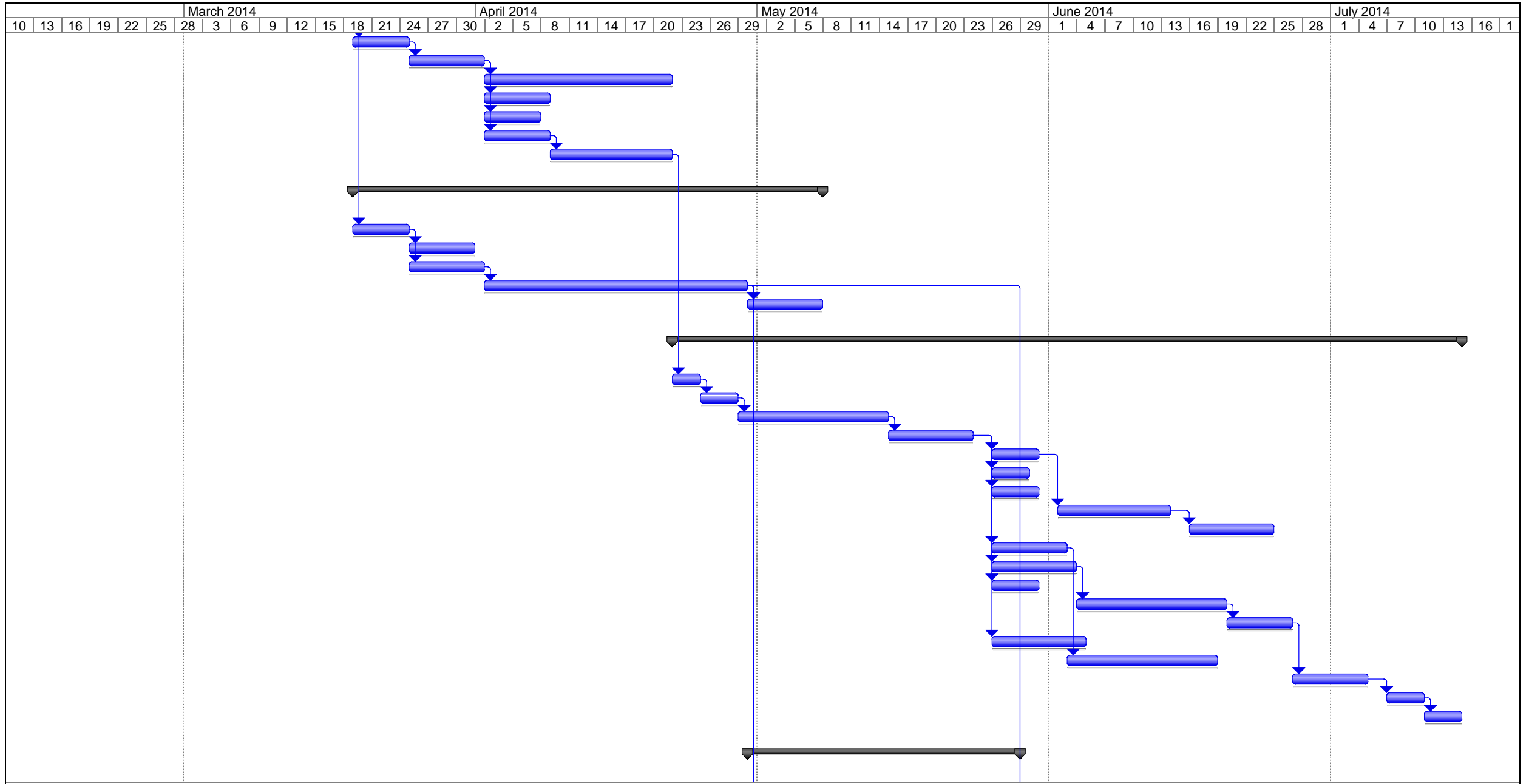
ID	Task Name	Duration	Start	Finish	December 2013												January 2014												February 2014					
					12	15	18	21	24	27	30	3	6	9	12	15	18	21	24	27	30	2	5	8	11	14	17	20	23	26	29	1	4	7
81	PREPARE GRADE FOR WALKWAYS	5 days	Wed 4/30/14	Tue 5/6/14																														
82	FORM WALKWAYS & STEPS	7 days	Wed 5/7/14	Thu 5/15/14																														
83	INSTALL WALKWAYS	3 days	Fri 5/16/14	Tue 5/20/14																														
84	STRIP FORMS	3 days	Wed 5/21/14	Fri 5/23/14																														
85	SEAL CONCRETE	3 days	Mon 5/26/14	Wed 5/28/14																														
86	CLEAN UP	2 days	Mon 5/26/14	Tue 5/27/14																														
87																																		
88	LANDSCAPING	14 days	Thu 5/29/14	Tue 6/17/14																														
89																																		
90	ROUGH GRADE EXTERIOR	4 days	Thu 5/29/14	Tue 6/3/14																														
91	BRING IN TOP SOIL AND SPREAD	4 days	Wed 6/4/14	Mon 6/9/14																														
92	INSTALL LAWN	2 days	Tue 6/10/14	Wed 6/11/14																														
93	INSTALL PLANTS	2 days	Thu 6/12/14	Fri 6/13/14																														
94	CLEAN UP AND CLEAR SITE	2 days	Mon 6/16/14	Tue 6/17/14																														

Project: HOUSE A Date: Wed 9/10/14	Task 	Progress 	Summary 	External Tasks 	Deadline 
	Split 	Milestone 	Project Summary 	External Milestone 	



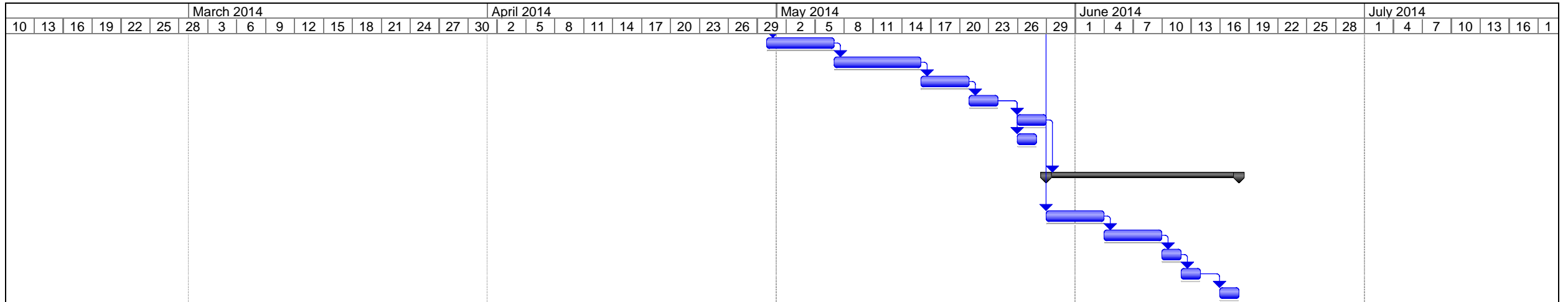
Project: HOUSE A
Date: Wed 9/10/14

Task		Progress		Summary		External Tasks		Deadline	
Split		Milestone		Project Summary		External Milestone			



Project: HOUSE A
Date: Wed 9/10/14

Task		Progress		Summary		External Tasks		Deadline	
Split		Milestone		Project Summary		External Milestone			



Project: HOUSE A
Date: Wed 9/10/14

Task		Progress		Summary		External Tasks		Deadline	
Split		Milestone		Project Summary		External Milestone			